

SCIROCCO

**** code 172B ****

AUTOMATIC MOISTURE REGAIN CABINET

for quick drying to determine the moisture content and regain percentage in textiles materials.

The instrument request, as essential accessories, a PC and an electronic precision balance.

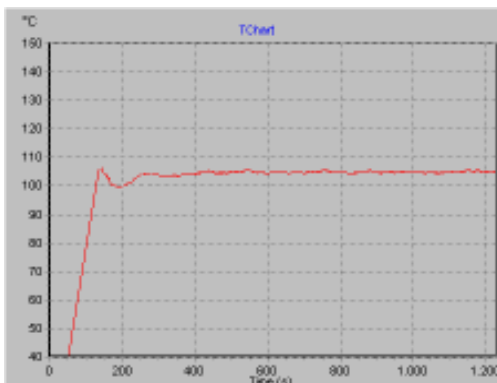
International standards / Norme internazionali

UNI EN ISO 2060, ISO 6741-1, ISO 6741-2, ISO 6741-3, ISO 6741-4, ASTM D1576, ASTM D2495, UNI 9213-1, IWTO 33-98, IWTO 34-98, UNI 9213-2, UNI 9213-3, UNI 1335, UNI 9213-4, UNI 9213-5, UNI 9213-6.

- **AUTOMATIC EXECUTION** of the drying cycles and automatic stop at the end of the tests (testing time for a sample of 100 grams is about 10 minutes).

- **AUTOMATIC WEIGHING** of the sample before and after each drying cycle not to affect the temperature in the conditioning chamber, and guarantee the max. accuracy of the test results eliminating the influence of both operator and external environment.

- **AUTOMATIC CONTROL** of temperature ($\pm 1^{\circ}\text{C}$) within the tolerance indicated by the international standards by means of a special algorithm. During the test, it is possible to visualize a graph for temperature monitoring.



- **AUTOMATIC CORRECTION** of the humidity recovery rate R% according to the Relative Humidity RH% of the external environment.

- **AUTOMATIC CALCULATION** of the commercial mass of a textile material lot according to the available data of the tested sample.

- **COMPLETELY PC CONTROLLED** while operating and during test execution.



*Photographs and descriptions of the present leaflet have to be considered as purely indicative and not binding.
*Le immagini e le descrizioni del presente catalogo sono da ritenersi puramente indicative e non vincolanti.

SCIROCCO

**** code 172B ****

- USER-FRIENDLY INTERFACE

The mentioned advantages distinguish "Scirocco" conditioning cabinet from all other cabinets available on the market.

TESTING PROCEDURE

To determine the commercial mass - that is the only weight of the tested material which can be determined with certainty, and considered the most important in commercial negotiations - the sample must undergo drying cycles (through a suction process) at +105°C (or +140°C in case of silk) until no weight variation is read.

At the beginning of the cycle, the conditioning chamber is pre-heated at the usual working temperature. After inserting the sample in the basket, the operator sets the test parameters, the conditioning temperature, the max. number of drying cycles and their duration. Before starting the test, and at the end of each drying cycle, the sample is automatically weighed.

The test automatically stops when the difference between 2 consecutive weighings is below 0,05%. The test parameters and the results are stored in a data-bank.

MESDAN S.p.A
via IV Novembre 25087 Salò Brescia
Tel 0365-440211 www.mesdan.it

| Real Regain Rate at the Dryer | | | | |
|-------------------------------|-----------------|---------------|----------|---------------|
| Scirocco MesdanLab | | | | |
| Customer Code | P1 | Date | 29/06/01 | Time 13.47.37 |
| Test Code | G100 | | | |
| Stock | partita | Lot | | lotto |
| Parcel | calo | Operator | | esam |
| Material | Wool (worsted) | Material R.R. | | 18 % |
| Conditioning Temperature | 105 C | | | |
| Number of Samples | 1 | | | |
| Humid Weight | 100,43 g | | | |
| Real Regain Rate | 11,657 % | | | |
| Humidity | 10,44 % | | | |
| Dry Weight | 89,9 g | | | |
| Present Dry Weight | 89,94 g | | | |
| Corr. Coeff of Net Mass | 5,681 % | | | |
| Net Mass | 100 kg | | | |
| Commercial Mass | 105,681 kg | | | |
| Testing Machine | SCIROCCO MESDAN | | | |
| Testing Conditions | 20 C | Humidity | | 60 % |
| Sample Description | | | | |
| Lana merino | | | | |

This report shows the results of a test performed on a yarn sample from a yarn lot in stock, which must be invoiced at the official moisture recovery rate. The report shows all the test parameters and results, and can be customised adding, for example, the name of the producer.

*Photographs and descriptions of the present leaflet have to be considered as purely indicative and not binding.
*Le immagini e le descrizioni del presente catalogo sono da ritenersi puramente indicative e non vincolanti.

SCIROCCO

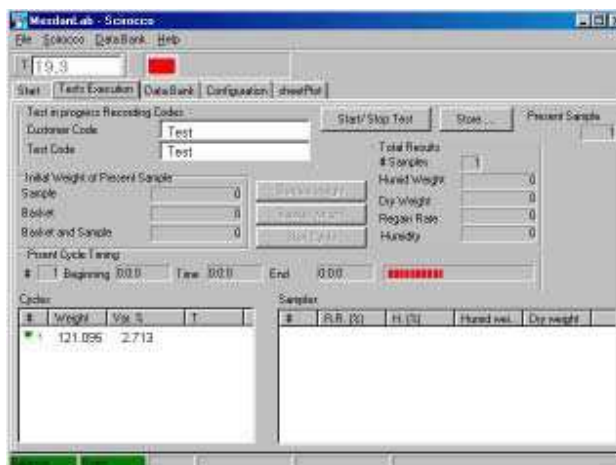
**** code 172B ****

PC CONTROLLED

The operator only sets the test parameters and inserts the sample in the chamber. Then the test is automatically performed. SCIROCCO's software controls the instrument functioning during any test phases.

The temperature is controlled by an algorithm, which limits the variations of the preset value at $\pm 1^{\circ}\text{C}$ - as requested by the international standards, in order not to damage the sample.

The user interface is composed by displays thought to simplify the use of the instrument.



| CARATTERISTICHE GENERALI | GENERAL CHARACTERISTICS |
|--|---|
| Termoregolatore elettronico. | Electronic thermoregulator. |
| due cestelli portamateriale \varnothing 215 x H 220 mm ciascuno. | Two sample holder baskets \varnothing 215 x H 220 mm each one. |
| Barra con ganci per la movimentazione dei cestelli portamateriale. | Bar with hooks for sample holder baskets handling. |
| CD per installazione software dedicato. | CD for dedicated software installation. |
| Range temperatura di utilizzo; fino a $+140^{\circ}\text{C}$ | Temperature range up to $+140^{\circ}\text{C}$ |
| Precisione della temperatura: $\pm 1^{\circ}\text{C}$ | Accuracy of the set temperature: $\pm 1^{\circ}\text{C}$ |
| Accuratezza della sonda temperatura: $\pm 0,01^{\circ}\text{C}$ | Accuracy of the temperature reading probe: $\pm 0.01^{\circ}\text{C}$ |
| Sistema di protezione anti surriscaldamento | Safety system to avoid overheating |
| Movimento elettronico del cestello per l'esecuzione delle pesate | Electronic movement of the basket to perform sample weighing |
| Regolazione flusso di scarico dell'aria | Adjustment of the air exhausting flow |
| Sistema di riscaldamento: 9 resistenze | Heating system: 9 resistances |
| Dimensioni camera di condizionatura: 340 x 350 x 420 mm | Conditioning chamber dimensions: 340 x 350 x 420 mm |
| Potenza installata: 10 Kw | Installed power: 10 Kw |

*Photographs and descriptions of the present leaflet have to be considered as purely indicative and not binding.

*Le immagini e le descrizioni del presente catalogo sono da ritenersi puramente indicative e non vincolanti.

SCIROCCO

**** code 172B ****

| | |
|--|---|
| Alimentazione elettrica: 3 x 400 V trifase + N – 50/60hz. | Power supply. 3 x 400 V three-phases + N – 50/60hz. |
| Alimentazione elettrica: 3 x 230 V trifase + N – 50/60hz. | Power supply: 3 x 230 V three-phases + N – 50/60hz. |
| Dimensioni: 1000(L) x 700(P) x 1230(H) mm. | Dimensions: 1000(L) x 700(W) x 1230(H) mm. |
| Peso netto: 209 kg | Net weight: 209 kg |
| ACCESSORI ESSENZIALI | ESSENTIAL ACCESSORIES |
| Bilancia elettronica con portata 2200 g, precisione 0.01 g, code 165.706 | Electronic balance 2200 g, accuracy 0.01g, code 165.706 |
| Personal computer, code 237.92 | Personal Computer, code 237.92 |
| Monitor lcd, code 250.300 | LCD monitor, code 250.300 |
| Stampante A4 getto d'inchiostro, code 250.4 | Ink jet A4 printer, code 250.4 |
| OPTIONAL | OPTIONAL |
| Certificato di calibrazione, code 172B CC1 | Calibration report, code 172B CC1 |
| <small>*Photographs and descriptions of the present leaflet have to be considered as purely indicative and not binding. *Le immagini e le descrizioni del presente catalogo sono da ritenersi puramente indicative e non vincolanti.</small> | |

*Photographs and descriptions of the present leaflet have to be considered as purely indicative and not binding.
*Le immagini e le descrizioni del presente catalogo sono da ritenersi puramente indicative e non vincolanti.